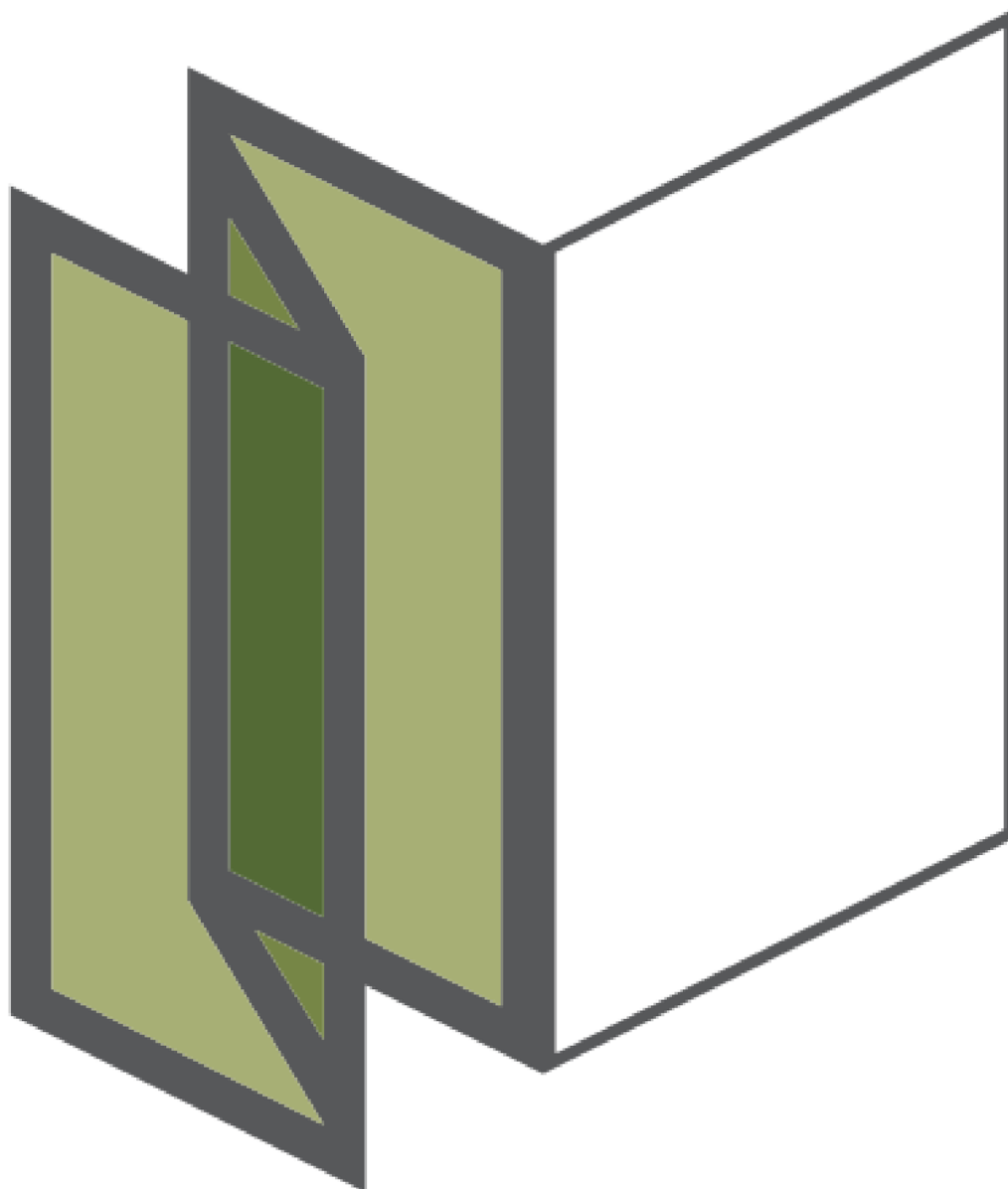


# ECOLINE · HIGHLINE WOODLINE · COMBILINE

Glas-Faltwand | Bi-Folding door



**WICHTIGE INFORMATIONEN UND  
HINWEISE FÜR ENDKUNDEN  
IMPORTANT INFORMATION AND  
OPERATION NOTES FOR END USERS**

## IMPORTANT INFORMATION AND OPERATION NOTES FOR END USERS

---

In order to enjoy your SOLARLUX folding glass door for as long as possible, please observe the following points regarding its use and care.

### Operation:

- For opening and closing the folding glass door please note the specific information on the the following pages as far as they relate to your folding glass door.



When operating the folding glass door do not place your fingers into the joints of the panels:  
Danger of trapping!

### Applications, cleansing and care of stainless steel:

- SOLARLUX only employs the use of high grade stainless steel for its ironmongery and handles, which are especially hygienic and corrosion resistant. The corrosion resistance is enhanced through an invisible passive coating. The stainless steel is therefore externally rated. If rust should form on the stainless steel surface, then this is so called flight rust. This type of surface rust can form especially in coastal areas, and in the proximity of industrial or high traffic areas due to presence of aggressive substances in the air.
- During the construction phase, it is necessary to protect the ironmongery and handles from contact with mortar and cement splashes or dust, as well as metallic particles and sweat.
- For regular cleansing you can use alkali, neutral and any general cleaning agents, as well as specifically designed stainless steel cleaning fluids. Tough stains should be rubbed off using a synthetic cloth. Under no circumstances must you use steel wool or hard metal objects to get rid of dirt on the handles, as this will accelerate the formation of flight rust.
- Please do not hesitate to contact us for the comprehensive advice regarding the care and maintenance of stainless steel.

### Cleaning:

- Any objects or dirt inside the top or bottom guiderails of your doors is to be removed as soon as possible. They might otherwise cause damage to the rollers and guides of your doors.
- Only use neutral general cleaning agents. Acidic or abrasive cleaners can damage the coating of your doors.
- Regularly check the condition of the rubber seals. These should also be cleaned and cleared of any sediments or dust.
- Any damage or scratches to the finish should be professionally repaired as soon as possible using original and SOLARLUX recommended touch-up coating. Please do not hesitate to contact us.

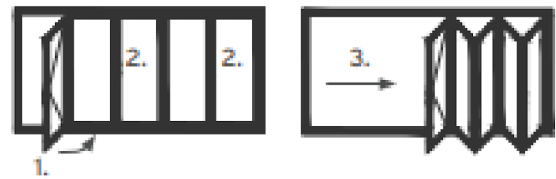
### Maintenance:

- All factory-produced surface finishes on aluminium profiles are long-term weatherresistant.
  - All factory-applied coating systems of the elements in wood are designed for extended periods (depending on the exposure of the elements) before refurbishment is required.
  - All hinges and locking devices are of the low maintenance type and are almost wear-free.
  - To preserve the value of your investment check the surfaces, hinges, locking systems etc. on a regular basis for full functioning. We recommend regular lubrication of the hinges with suitable lubricants (about twice per annum). The wooden surfaces are to be treated using the care set (cleaner and conditioner can be supplied by Solarlux).
  - For masking of finally treated wooden folding facades during refurbishing work only masking tape such as TESA 4438 or 4439 or equivalent must be used which is approved for acrylic resin paint (danger of peeling off paint). The masking tapes has to be removed within 2 weeks.
-

## OPERATING A FOLDING GLASS DOOR

### with swing panel:

1. Unlock the swing panel by turning the handle 180°. Open the swing panel and latch into the panel catch of the adjacent panel.
2. Open all other panel pairs and partially fold them.
3. Slide all panels to the side to form a stack. To close the folding door proceed in reverse order.



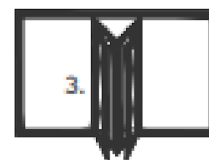
### without swing panel:

1. The folding door is unlocked and unfolded at the entrance / exit panel pair by turning the handle 180°.
2. Open all panel pairs and partially fold them.
3. Slide all panels to the side to form a stack. To close the folding door proceed in reverse order.



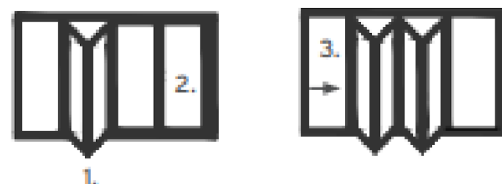
### with swing panel; panels sliding to the left or right:

1. Unlock swing panel by turning the handle 180°. Open swing panel until it engages with the panel catch of the adjacent panel. If the adjacent panel also has a locking handle, it must be opened before the two panels latch into the panel catches.
2. Open the other panel pairs and partially fold them.
3. Slide all panels into one stack at the desired position. To close the folding door proceed in reverse order.

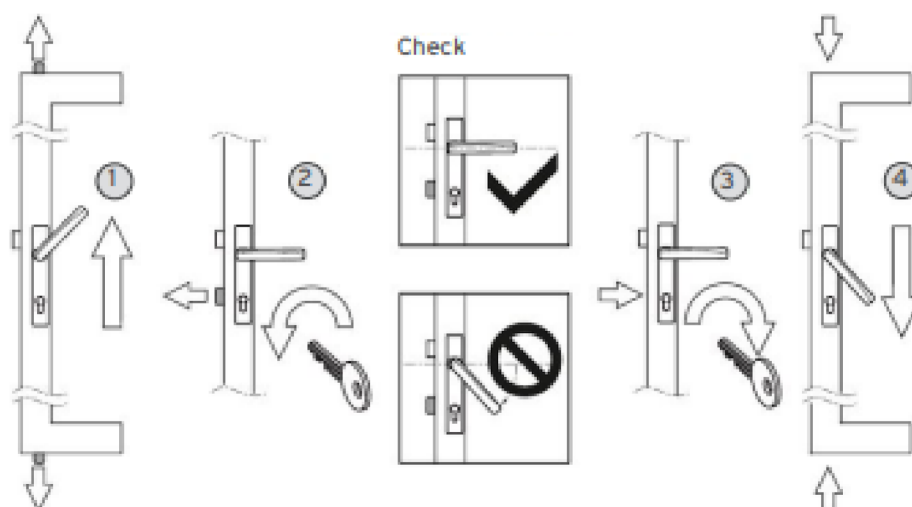


### without swing panel; panels sliding to the left or right:

1. The folding door is unlocked and unfolded / opened at the entrance / exit panel pair by turning the handle 180°.
2. Open all panel pairs and partially fold them.
3. Now all panels can be slid together to form a stack. To close the folding door proceed in reverse order.



## Operation of the handle-operated SL convenience lock



### Engage and lock

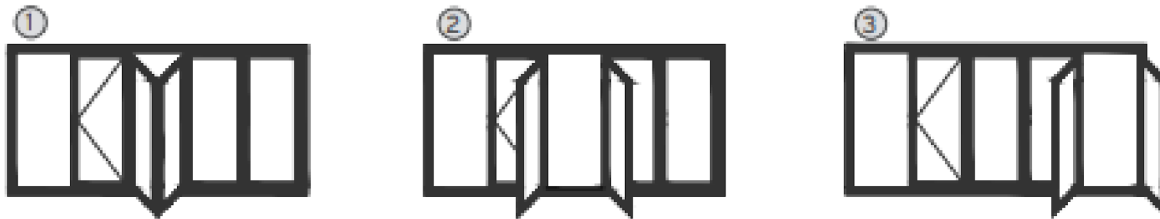
1. Lifting the handle by about 45° upwards to its stop and let it move back into its normal position.
2. Only now the lock can be keyed by turning the key or thumbturn.

### Unlock and disengage

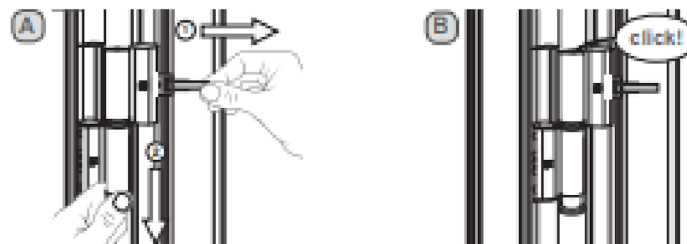
3. Unlock the lock using the key.
4. Depression of the handles retracts latch and disengages the flush bolts at the top and the bottom. The door is opened.

# USE OF REMOVABLE HINGE PINS FOR EASY CLEANING OF FOLDING GLASS DOOR ECOLINE, HIGHLINE, COMBILINE UND WOODLINE

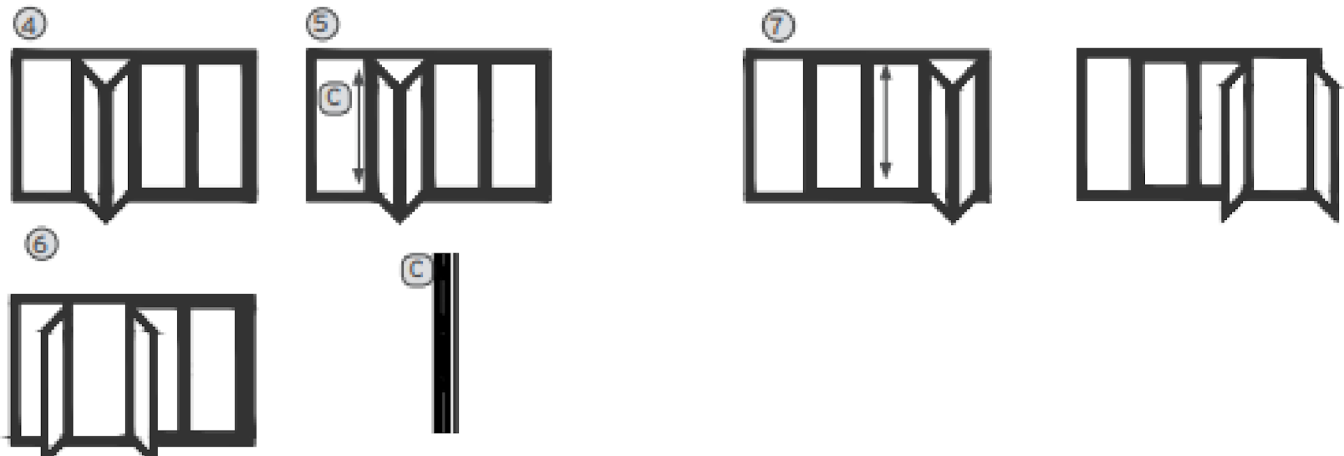
## with swing panel



- ①
  - Unlock and open the swing panel
  - Open the (first) panel pair and partially fold it.
  - Close and lock the swing panel again in the frame!
  - ⚠ **Note:** Observe locking piece position in frame for filling profiles!
- ②
  - First, pull the hinge pins **(A)** out of the hinges until they click into position.
  - Open up the paired panels and clean the outside of them.
  - Once this is done, insert the panels back into the hinge parts and push the hinge pins back into place.
  - ⚠ **Note:** The hinge pin must click into place audibly **(B)**!
- ③
  - If there are several panel pairs, then open / unfold only the next pair and close / lock the previously cleaned panel pair and then continue with ②.



## without swing panel



- ④
  - Unlock and open the first set of paired panels. Fold them together until the mullion is positioned above the locking pieces in the frame.
- ⑤
  - Use the shoot bolt **(C)** to secure the pair's mullion in the locking pieces.
- ⑥
  - For instructions on how to operate the cleaning pin, see point ②, above.
- ⑦
  - The first set of paired panels **must be** closed / locked in place before the other sets of paired panels can be cleaned!

### ATTENTION !

The set of paired panels with the mullion can only be cleaned when the mullion is locked into the fixed locking pieces using the shoot bolt!

