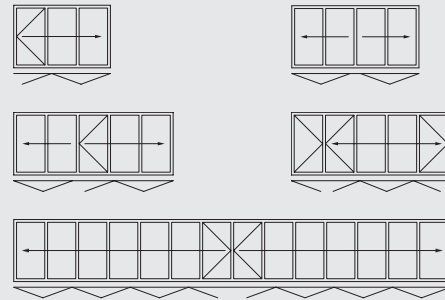


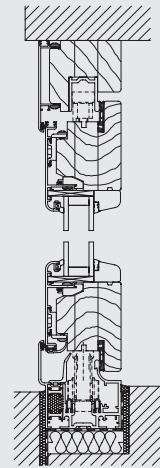
## FLOOR TRACKS



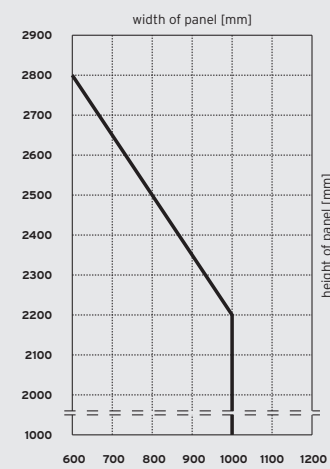
## CONFIGURATION VARIANTS



## VERTICAL SECTION



## PANEL SIZE CHART



## VARIANTS

- ▮ Floor mounted or top-hung folding glass door
- ▮ Panels can be ordered to open either internally or externally, to the left and/or right

## PROFILE SYSTEM

- ▮ 66 mm panel thickness
- ▮ Slim frame and panel profiles (panel joint 169 mm)
- ▮ Heat-insulated wood/aluminium profile system: laminated wood panel frames with technical solid mortice and tenon joints on the inside and protecting aluminium cladding profiles on the outside
- ▮ Double wraparound seal protects from wind and rain
- ▮ Wood from sustainably sourced forests are also available

## WINDOW/DOOR SYSTEM

- ▮ Can be combined with SL 68HA standard window systems: Tilt and turn, fixed units, PSK etc.

## FITTINGS

- ▮ No protruding runner and guide tracks
- ▮ Concealed fittings for one-handed operation
- ▮ Lockable in any partly open position

## GLAZING

- ▮ Heat-insulating glass as standard
- ▮  $U_g = 1,1 \text{ W/m}^2\text{K}$  with 2 x 4 mm toughened glass
- ▮ Maximum glazing depth 26 – 32 mm

## SURFACE FINISH

- ▮ Wood finish according to SL colour chart: ecologically friendly water-based lacquer
- ▮ Aluminium cladding profile: Powder coated according to RAL or Eloxal according to EURAS

## U-VALUE

- ▮  $U_w = 1,3 \text{ W/m}^2\text{K}$  ( $U_g = 0,7 \text{ W/m}^2\text{K}$ , insulated seldedge) according to EN ISO 10077 on the basis of a three panel folding glass door, WxH 2700 x 2300 mm

## MAXIMUM PANEL SIZES

- ▮ 1000 x 2200 mm
- ▮ 600 x 2800 mm
- ▮ Panel weight up to 70 kg
- ▮ Special sizes on request

## TESTED FOR

- ▮ Ventilation Class 3 to EN 12 207
- ▮ Impermeability to rain Class 9A to EN 12 208 (corresponds to test group C according to EN 18 055)



5670209-90 / 08.2011 / subject to technical changes



WOOD/ALUMINIUM  
FOLDING GLASS DOOR  
SL 67



www.solarlux.com

 **SOLARLUX**<sup>®</sup>  
glass in motion

 **SOLARLUX**<sup>®</sup>



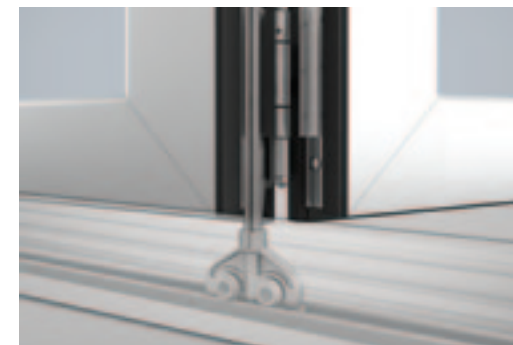
#### SAFE OPERATION

The entry / exit panel (in the case of an odd number of panels) can be secured by means of a special catch and can be carried along safely with the moving façade.



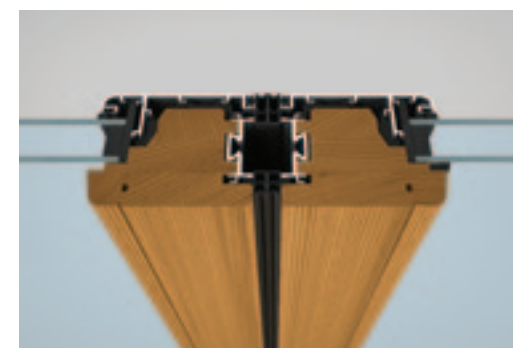
#### ENGINEERED

Stainless steel runners and tracks ensure effortless sliding action of the folding glass door. Easy to open and to close.



#### HEAT INSULATION

High-quality wood offers the best heat insulation according to the latest energy conservation regulations (EnEV).



#### EASE

Natural wood on the inside creates a warm and natural atmosphere. Alternatively the wood can be supplied from certified sustainable forestry. A wide variety of colours are available creating exciting design possibilities.



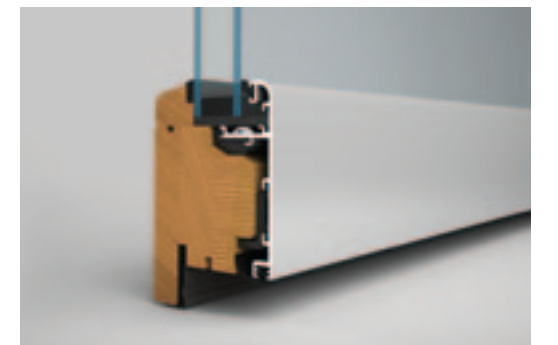
#### SECURITY AND COMFORT

The integrated multipoint locking system and the comfortable door handle with catch bolt, lock and profile cylinder ensure high security.



#### WEATHERPROOF

Vented aluminium cladding on the outside afford the best weather protection whilst minimising external maintenance.



#### STABILITY

24 mm throwbolts provide additional stability to the system and also increase security.



#### WIDTH ADJUSTMENT

Small adjustments to the width of the panels can be made by adjusting the hinges with a screwdriver.

