

### Profile System

- | 70 mm panel thickness, multicavity system with 24 mm thermal break
- | 80 mm frame thickness
- | Slim frame and panel profiles (panel joint 157 mm)
- | Robust multi-chamber profile with strong corner joints (pressed and bonded)
- | High degree of stability provided by posts between the folding panels (panel size up to 900 + 3500 mm)
- | Flush floor track without upstand for unhindered access according to DIN 18025 available
- | Tilt and turn panel within folding panel possible

### Window/Door System with matching SL 80 window range

- | Tilt and turn, parallel slide and tilt, fixed units

### Furniture

- | No protruding runner and guide tracks
- | Concealed fittings for one-handed operation
- | Curved façade possible (angles on request)
- | Open panel pair can be swivelled over 90°
- | Lockable in any partly open position
- | Integrated multi-point locking system ensures high security

### Glazing

- | Heat-insulating glass as standard  
 $U_g = 1,1 \text{ W/m}^2\text{K}$  ( $k = 1.0$ ) with 2 x 4 mm toughened glass
- | Glass thicknesses from 20 to 38 mm available.

### Finish

- | Powder coating to RAL
- | Anodised aluminium to EURAS

### U-value

- |  $U_w = 1,8 \text{ W/m}^2\text{K}$  to DIN EN ISO 10077-1:2000 on the basis of a three panel folding façade, W x H 2700 x 2300 mm


### Tested for

- | Ventilation Class 3 to EN 12 207
- | Impermeability to rain Class 9A to EN 12 208 (corresponds to test group C according to 18 055)
- | Resistance to wind Class C3/B3 to 12 210



 wintergardens




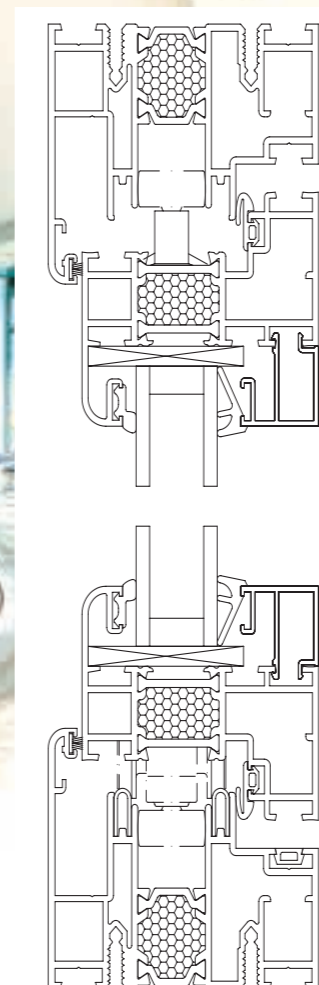
 folding façades



 commercial façades



 balcony glazing



## SL 70e FOLDING FAÇADE

Product Data

56-02-10-1 / 012008



**Safe operation**

The entry / exit panel (in the case of an odd number of panels) can be secured by means of a special catch and can thus be carried along safely with the moving façade



**Furniture**

Concealed fittings for one hand operation (stainless steel or plastic handles)



**Heat insulation**

Solid multi-chamber profiles with thermal break webs and foam core offer the best heat insulation according to the latest energy conservation regulations (EnEV)



**Width adjustment**

A screwdriver is all you need to adjust the width of the panels

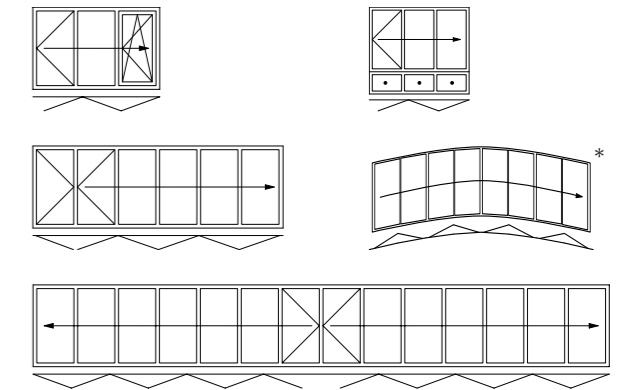
burglary resistant hinge pins



Specification for SL 70e Folding Façade

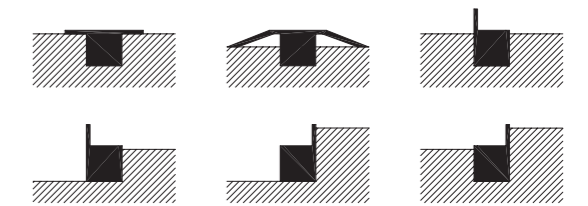
**Examples in plan view / configuration variants**

Available as floor-mounted folding façade. Can be folded outward, inward, to the left or to the right - as required. For folding façades beyond 3000 mm a pair-panel configuration and a true dividing transom rail is required.

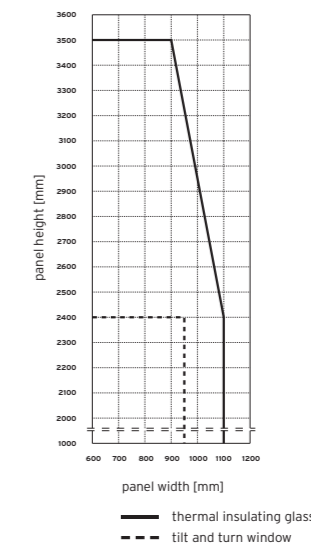


\* on inquiry

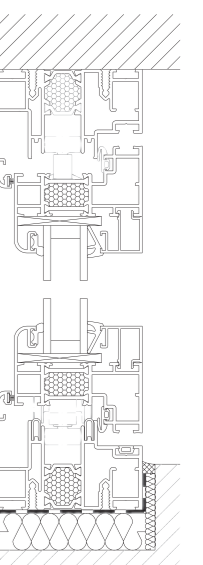
**Examples of floor track detail**



**Panel size chart**



**Vertical section**



**Security and comfort**

The integrated multi-point locking system and the comfortable door handle with catch bolt, lock and profile cylinder ensure high security



**Smooth and easy operation**

Stainless steel runners and tracks ensure effortless sliding action of the folding façade

Cardanic upper-running carriage



**Stability**

Espagnolettes with 24 mm throw lock the panels into the top and bottom track of the frame ensuring they withstand gales and afford high security



**Height adjustment**

Even after installation the folding façade can be easily height-adjusted by about 6 mm - which is important if settling of the building occurs

Panel weight vertically transmitted to the floor track by movable rolling posts

